



photo: emtboc2022.it

World MTB Orienteering Championships
Junior World MTB Orienteering Championships
18 – 27/8/2023
Jičín – Czech Republic

Dear competitors, officials, spectators
and other supporters of Mountain Bike Orienteering,
we are pleased to welcome you in Jičín, town,
which will host the World Mountain Bike Orienteering
Championships and Junior World Mountain Bike
Orienteering Championships in 2023.



wmtboc2023.cz

Invitation to Jičín, Czech Republic /Czechia

On behalf of the Organizing Committee
I am honoured to invite all the IOF federations
to take part in the World Mountain Bike
Orienteering Championships 2023 in Jičín,
Nová Paka, Mostek and Jabkenice.

The event centre is located to the beautiful part of
the Czech Republic called "the Czech Paradise",
in Jičín. I really hope you will enjoy your stay here
and our organising team is doing its best to make
you feel really like in a paradise.

To preserve the nature that plays important part
in our everyday life here and in the sport we all
love so much, orienteering, we plan to prepare
the competitions as sustainable and eco-friendly
as possible. We really hope that you will join us
in this commitment.

Our town is proud of the name "Jičín, the city
of fairytales" and I would like to wish to all of
you, that with your dedication, motivation and
performance you will write your own personal
fairytale full of vibrant memories of Czech
paradise. By the way, a playful festival of the same
name ("Jičín, the town of fairytales") takes place
shortly after the championship, at the beginning
of September, and you are more than welcome to
stay and visit.

We are looking forward to this remarkable
sports event and we are doing our best to make
the 21st World Mountain Bike Orienteering
Championships a great success. I hope you will
have great time in the Czech Republic, and I wish
good luck to all competitors.



Pavel MUSIL
Event Director WMTBOC 2023, Jičín



Organizers

International Orienteering Federation (IOF)

> <https://www.orienteering.sport>

Czech Orienteering Federation (ČSOS)

> <https://www.orientacnisporty.cz/en/>

SPORTCENTRUM Jičín

> <https://scjicin.cz>

Event Director: Pavel Musil

Competition Director: Jiří Putík

IOF Senior Event Adviser: Magnus Wallenborg (SWE)

National Controller: Milan Meier

Czech Orienteering Federation representative:

Zbyněk Pospíšek

Information & contacts

www.wmtboc2023.cz

info@wmtboc2023.cz

www.facebook.com/wmtboc2023jicin

Pavel Musil – event director contacts:

Phone: +420 602 391984

E-mail: musil@wmtboc2023.cz

Program

18. 8. 2023	Friday	Arrival
19. 8. 2023	Saturday	Arrival, Model Sprint
20. 8. 2023	Sunday	Sprint
21. 8. 2023	Monday	Model Forrest
22. 8. 2023	Tuesday	Long
23. 8. 2023	Wednesday	Middle
24. 8. 2023	Thursday	Rest day
25. 8. 2023	Friday	Mass Start
26. 8. 2023	Saturday	Relay, banquet
27. 8. 2023	Sunday	Departure

Classes

World MTB Orienteering Championships

There are classes for women and one for men Elite and the same for women and for men U23.

In the Mass start, Middle distance and Sprint each Federation may enter up to a further 2 women and 2 men who qualify for the Women U23 and Men U23 classes respectively.

No U23 classes are offered in the Long distance.

World Junior MTB Orienteering Championships

There is one class for women and one for men.

Only competitors who are entitled to compete in the classes W20 or M20 may participate.

Participation and rules

All competitors represent a Federation. Each Federation may enter a team of an unlimited number of competitors and team officials. A competitor must have a valid IOF Athlete License.

Competitors participate at their own risk. Third party insurance and personal injury insurance is compulsory and shall be the responsibility of their federation or themselves, according to national regulations.

World MTB Orienteering Championships

In the Mass start, Middle distance, Long distance and the Sprint every Federation may enter up to 6 women and 6 men and, in addition, the current World Champions for the distance may be entered by their Federation(s).

In the Relay, each Federation may enter two women's teams and two men's teams, each consisting of 3 team members. Incomplete teams and teams with cyclists from more than one Federation are not allowed.

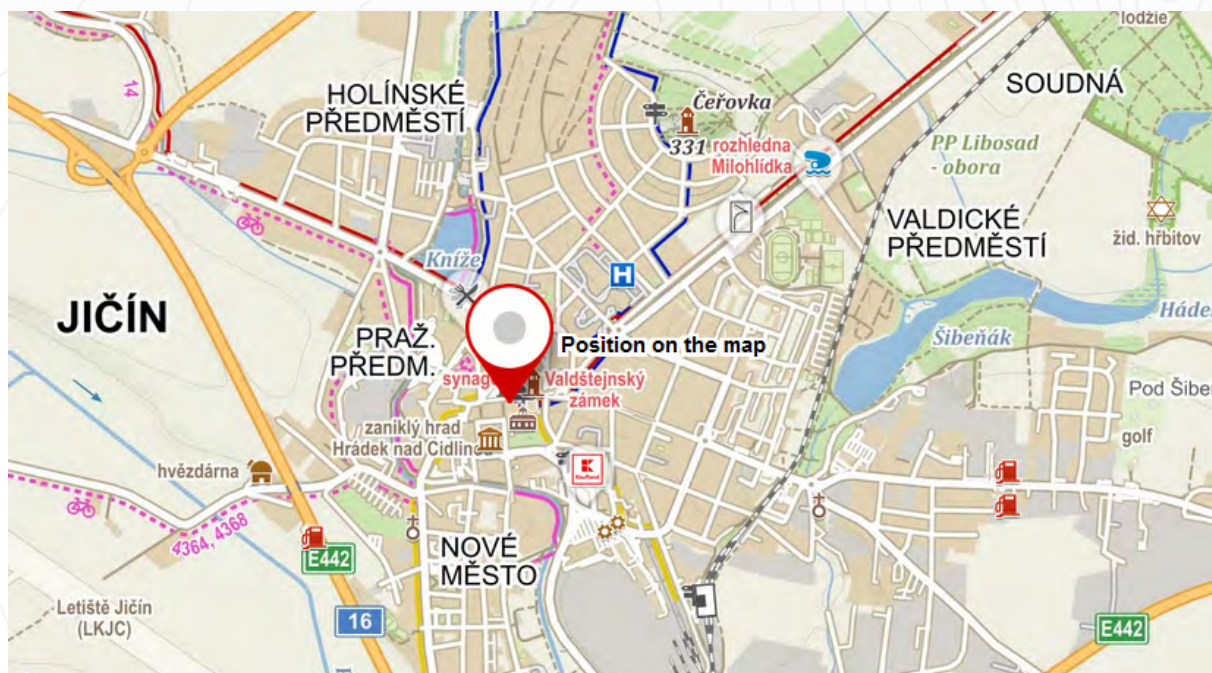
World Junior MTB Orienteering Championships

In each competition every Federation may enter up to 6 women and 6 men. In the Relay, each Federation may enter two women's teams and two men's teams, each consisting of 3 team members. Incomplete teams and teams with cyclists from more than one Federation are not allowed.



Venues / Event Centre

Event centre will be in the Jičín Castle
Address: Valdštejnovo náměstí 1, 50601 Jičín
GPS: 50.4364153N, 15.3520497E
> <https://goo.gl/maps/jLa2D5oWV18tEiMp9>



Venues / Competition

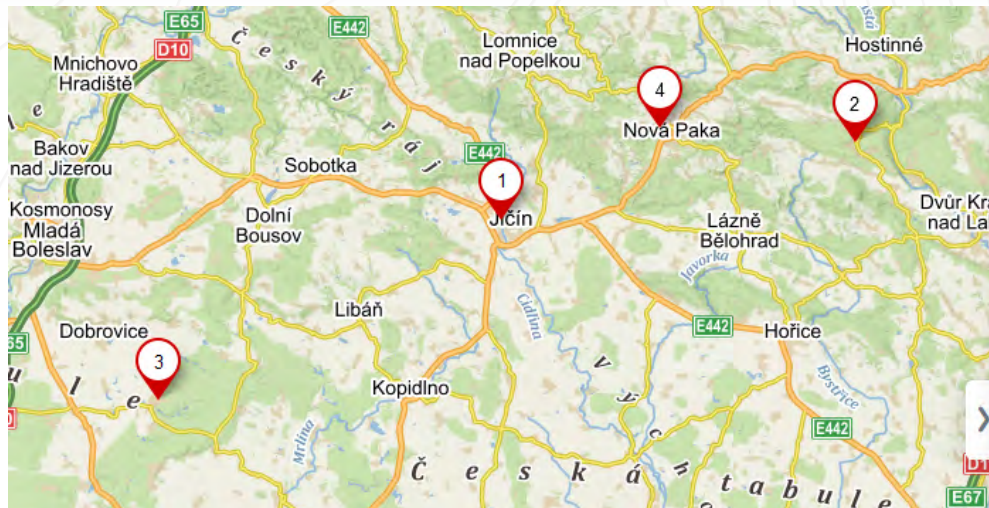


Sprint > Arena for sprint will be directly in **Jičín (1)** town close to the Event centre.

Long and Middle > Arena for Long and Middle will be in village **Mostek (2)**, 30 km from Jičín (30 min of driving).

Mass start > Arena for Mass start will be in village **Jabkenice (3)**, 40 km from Jičín (40 min of driving).

Relay > Arena for Relay will be in **Nová Paka (4)** town, 20 km from Jičín (20 min of driving).



- 1 Sprint - arena Jičín**
Valdštejnovo náměstí, Jičín, Jičín
50.4370081N, 15.3518486E
- 2 Long & Middle - arena Mostek**
50°29'4.068"N, 15°41'41.844"E
50.4844631N, 15.6949567E
- 3 Mass start - arena Jabkenice**
50°19'30.782"N, 15°1'11.943"E
50.3252175N, 15.0199842E
- 4 Relay - arena Nova Paka**
50°29'35.571"N, 15°30'22.297"E
50.4932144N, 15.5061936E

For list of arenas and directions, please visit:

> <https://en.mapy.cz/s/kabasaleja>

Embargoed areas / Overview of the region with Event centre marked



Link to embargoed areas:

> <https://www.google.com/maps/d/edit?mid=1xxQqBEOqqI47turZiJQJGWxx0KqbrTry&usp=sharing>

Any attempt to survey or train in the competition terrain is forbidden, unless explicitly permitted by the organizer. The embargoed areas are out of bounds for all potential participants and team members, including competitors, team leaders, coaches, doctors, and any other person who through their knowledge of the terrain may influence the result of the competitions.

Exceptions to this area:

- Passage through the embargoed areas is allowed on public roads by vehicle.

Previous maps

- **Jičín** (Foot-O), 2018, 1:5 000 > <https://mapy.orientacnisporty.cz/data/jpg/9660X.jpg>
- **Za barakem** (Foot-O), 2007, 1:10 000 > <https://mapy.orientacnisporty.cz/data/jpg/4722a.jpg>
- **Raholec** (MTBO), 2016, 1:15 000 > <https://mapy.orientacnisporty.cz/data/jpg/8696X.jpg>
- **Vičí kokotec** (MTBO), 2006, 1:15 000 > <https://mapy.orientacnisporty.cz/data/jpg/5671b.jpg>
- **Netopyři** (MTBO), 2014, 1:15 000 > <https://mapy.orientacnisporty.cz/data/jpg/7469.jpg>
- **Holubi i Jeleni** (MTBO), 2014, 1:15 000 > <https://mapy.orientacnisporty.cz/data/jpg/7339.jpg>,
> <https://mapy.orientacnisporty.cz/data/jpg/7340X.jpg>
- **Pecka** (Foot-O), 2019, 1:10 000 > <https://mapy.orientacnisporty.cz/data/jpg/10521X.jpg>
- **Haklův Mlýn** (Foot-O), 2002, 1:15 000 > <https://mapy.orientacnisporty.cz/data/jpg/3495a.jpg>
- **Yperit** (Foot-O), 2010, 1:10 000 > <https://mapy.orientacnisporty.cz/data/jpg/5976a.jpg>
- **Humprecht** (Foot-O), 1996, 1:10 000 > <https://mapy.orientacnisporty.cz/data/jpg/2253a.jpg>
- **Svatojiřský les** (MTBO), 2010, 1:20 000 > <https://mapy.orientacnisporty.cz/data/jpg/5725a.jpg>



Training opportunities

An excellent chance to get top ready for WMTBOC2023 races is to take the 5 days MTBO event MTBO5days (July 5-9 2023) as a training package.

Details:

To know more, keep checking the event website: <http://www.mtbo5days.eu>, as additional information will be provided there.

Schedule:

- July 5, 2023: Stage 1 – middle
 - July 6, 2023: Stage 2 – sprint
 - July 7, 2023: Stage 3 – middle - mass start
 - July 8, 2023: Stage 4 – long
 - July 9, 2023: Stage 5 – semi-free order
- (Some of these races will be Czech Cup and probably WRE)

Event Center/Accommodation:

Poslův mlýn, Doksy, CZE

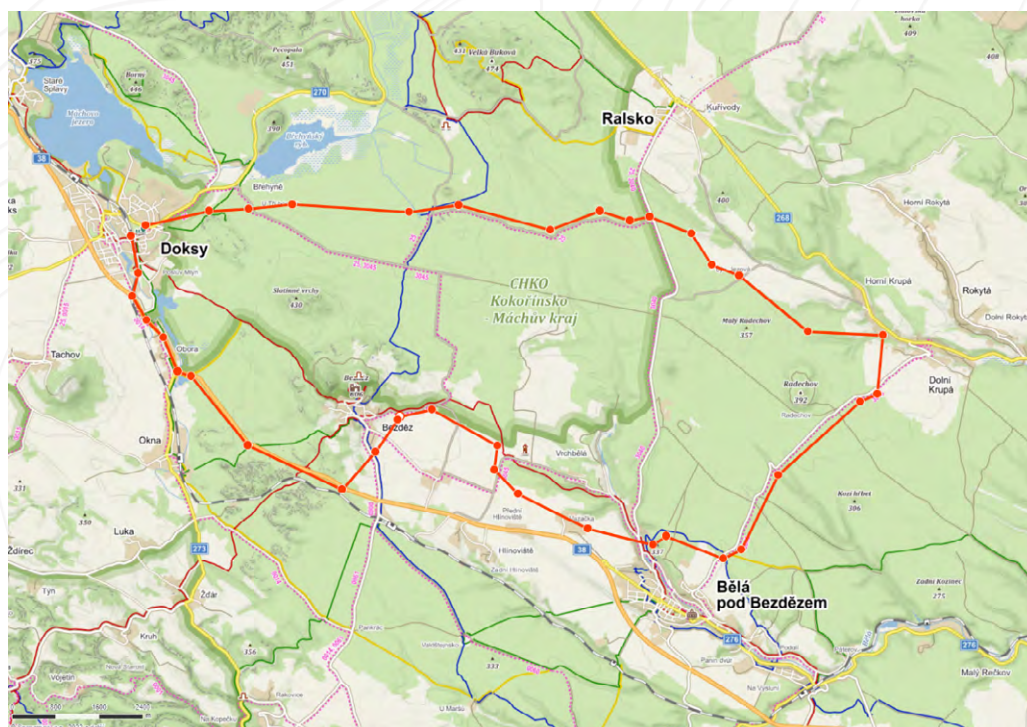
Race area:

The race area is a restricted area until the MTBO5days races take

Other Czech MTBO races are listed here:

> <https://www.mtbo.cz/zavody/kalendar-zavodu/>

There are some training possibilities on one year old maps\ from Czech MTBO Cup.

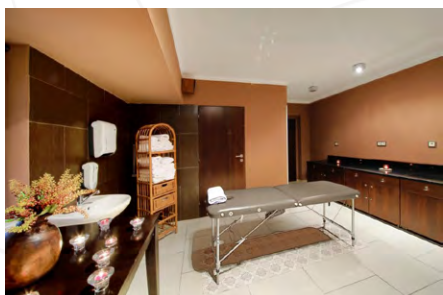
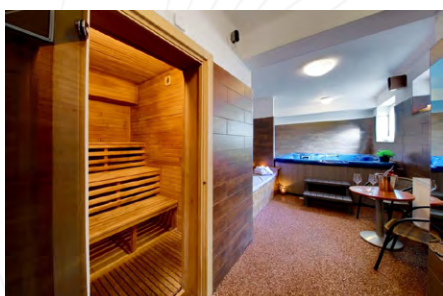


Accommodation and catering

All types of accommodation are within maximum 10 minutes of driving from Jičín centre.

A. Hotel 1 – 2, 3 and 4 beds rooms

1600 CZK/person/day
including half-board
(only 22 beds left)



A. Hotel 2 – 2, 3 and 4 beds rooms

1500 CZK/person/day
including half-board



A. Pension / Apartments

from 2 up to 6 beds (cap. 38 beds)

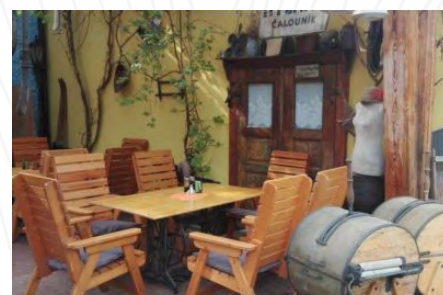
1200 CZK/person/day
including breakfast
(self-cooking available)



B. Pension 1 – 2,3 and 4 beds rooms

(capacity 48 beds)

1200 CZK/person/day
including half-board



Additional information

For booking accommodation please contact us at

> info@wmtboc2023.cz

Do not hesitate with booking as capacities are limited in summer season in this tourist region.

Deadlines:

Confirmation of estimated counts: 31st December 2022

Payment: 15th February 2023 – a 50% payment must be done by this date due to the fact mentioned above

Bike storage

Lockable/guarded bike storage will be arranged at accommodation.

Catering

Food and drink will be arranged for teams in the arenas for later specified fee.

Entries

All entries must be made via IOF Eventor:

World MTBO Championships:

> <https://eventor.orienteering.org/Events/Show/6877>

Junior MTBO Championships:

> <https://eventor.orienteering.org/Events/Show/6872>

Competitors may only be entered by their Federations.

Entries open on 1st February 2023

Entry fees:

	WMTBOC	JWMTBOC	Officials
Accreditation* (per person)	1.700 CZK	1.700 CZK	1.700 CZK
Sprint	1.700 CZK	1.200 CZK	
Long	1.700 CZK	1.200 CZK	
Middle	1.700 CZK	1.200 CZK	
Mass start	1.700 CZK	1.200 CZK	
Relay (per team)	5.000 CZK	3.600 CZK	

Prices includes Model Events and final banquet*.

Deadlines:

Team size by 18th of June 2023 at the latest:

- number of competitors in each discipline of each gender
- number of relay teams
- number of team officials
- name of team manager (name, e-mail address, phone)

Team names by 10th of August 2023 at the latest

- each competitor's name, gender, year of birth, the competitions in which he/she will compete, SI card number
- names of team officials

Late entries and withdrawals:

Late entries/withdrawals will be accepted as follows:

After 18th of June 2023

- entries will be accepted with surcharge of 20 %
- withdrawals will receive a refund of 80 %

After 10th of August 2023

- entries will be accepted with surcharge of 50 %
- withdrawals will receive a refund of 50 %

A charge for a possible name changes after 6th of July is 300 CZK per name.

After 16th of August 2023 no entries will be accepted.

Payment details:

Account owner:

SPORTCENTRUM Jičín, z.s.,

Brada 7, Brada-Rybníček, Czech Republic

BIC: FIOBCZPPXXX

IBAN: CZ04 2010 0000 0020 0189 3874

Bank: Fio banka, a.s., Millennium Plaza, V Celnici 10, 117 21 Praha 1, Czech Republic

All charges and bank fees are to be paid by the payer.

Full payment of all entries including accreditation fees must be made by 16th of July 2023 at the latest. An additional fee for late payment is 10%.

For additional entries or name change the payment must be sent within 4 days.



Map details and samples, terrain description

All maps will be drawn according to the International Specification for Mountain Bike Orienteering Maps (latest version).

Sprint

Event centre: Jičín
Map scale: 1:5 000
Contour interval: 5m

The Sprint area is a combination of suburban forest, park, but mostly urban area of a town with a varied terrain. The area has a dense network of tracks and paths with a good rideability. A rather flat area with one significant hill.

Map example:



Middle

Event centre: Mostek
Map scale: 1:10 000
Contour interval: 5m

The Middle distance area has the rugged and moderately hilly terrain, covered with a network of roads and paths with a varied rideability. The spruce forest is followed by a suburban forest and the edge of a small town, where the finish arena is located. Good visibility.

Map example:

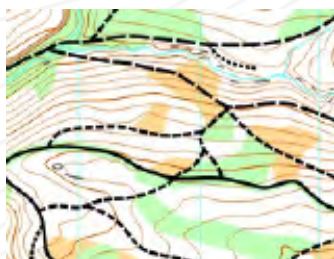


Long

Event centre: Mostek
Map scale: 1:15 000
Contour interval: 5m

The Long distance area is situated in submontane area in a hilly spruce (mostly) forest with many valleys and ridges. There are also populated areas on the map - villages, solitary houses, farms with meadows. Part of the area has a typical red clay subsoil that becomes slippery during rain. Steep slopes and climbing require a good riding technique. The whole competition area is covered with a network of forest roads and paths with a varied rideability.

Map example:



Relay

Event centre: Nová Paka
Map scale: 1:7 500
Contour interval: 5m

The Relay area is hilly to moderate hilly, mainly spruce suburban forest with an extensive network of paths and tracks. Some areas with a very dense path network occur. Paths and tracks are of a wide variety of speeds. Part of the map consists of urban development, made up of industrial and residential parts.

Map example:



Winning times

Winning times will be as specified in the IOF MTB Orienteering Rules for WMTBOC (16.8) and the IOF MTB Orienteering Rules for JWMTBOC (16.9) valid for 2023

> <https://orienteering.sport/mtbo/competition-rules/>

Punching system

SportIdent punching system will be used. Backup Sportident system will be used according to the latest recommendation of IT and MTBO IOF Committees.

All competitors must use Sportident cards. Rental of Sportident cards will be possible for a price of 150 CZK/ race. A deposit of 2 000 CZK per device will be charged.

Mass Start

Event centre: Jabkenice
Map scale: 1:15 000
Contour interval: 5m

The Mass start area is mostly flat with some moderate valleys. Mixed forest with a dense network of roads and tracks. Mainly good visibility with some parts with younger forest where the visibility is lower. Generally fast/very fast cycling.

Map example:



Transport

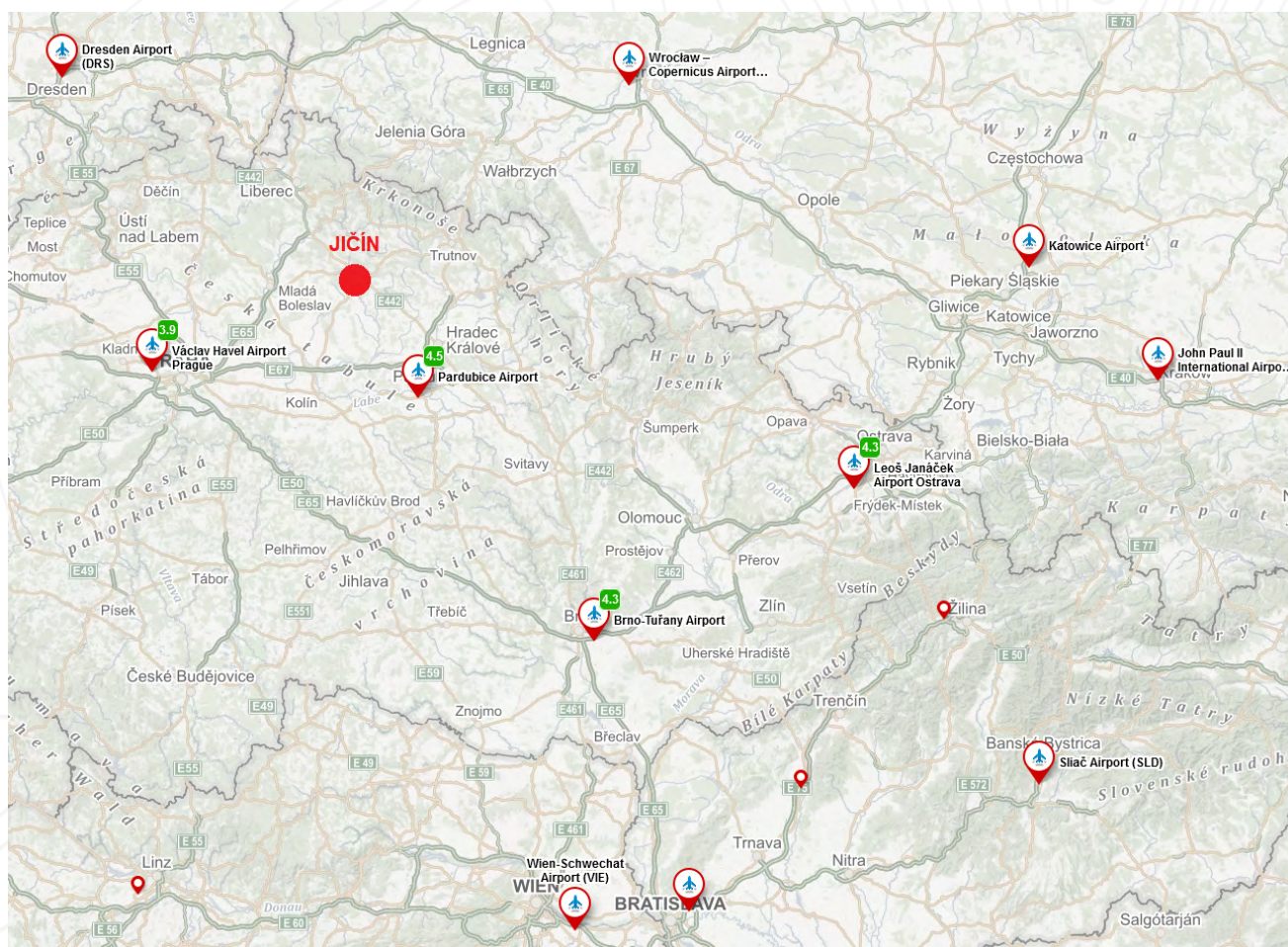
The closest international airport is Václav Havel Airport in Prague (PRG > www.prg.aero), 110 km / 1,5 hours drive to Jičín.

Other international airports are further away in neighbouring countries – see picture. Common rental services operate on those airports.

Jičín is connected only by regional trains but has a direct connection by bus from Prague. You must use public transport to get from the Airport first. Bikes can be taken on trains.

For more information, time tables, tickets and prices see:
> <https://idos.idnes.cz/en/vlakyautobusymhdvse/spojeni/>

For special transport requests, please contact the organisers > info@wmtboc2023.cz



Visas

According to the current regulations citizens of some countries must obtain a visa in order to enter the Czech Republic.

Please note that conditions of entry to the Czech Republic can change and all WMTBOC 2023 participants are advised to keep up to date of the current situation.

Please visit:

> https://www.mzv.cz/jnp/en/information_for_alien/index.html

> https://www.mzv.cz/jnp/en/diplomatic_missions/czech_missions_abroad/

Climate

August in the Czech Republic is one of the warmest months of the year, with average daily temperature of 23°C - 26°C.

However temperature can drop to 10°C during the night and rise up to 35°C in sunny days. August is also the month with lot of storms and rainfalls. One can expect a week of dry and sunny weather as well as days with all-day rain and cloudy sky.



**We are looking forward hosting
the World MTBO Championships
and Junior World MTBO
Championships 2023.**

**Looking forward meeting you
in Jičín, Czech Republic!**



photo: emtboc2022.it

Hazards

Wasp and hornets can be possibly encountered in the areas. Ticks, carrying Tick-borne encephalitis and Lyme disease are present. Competitors participate at their own risk. Insurance against accidents is the responsibility of their federation or themselves, according to national regulations. There are no other peculiarities of the event.

Clothing

During all the official events the competitors shall wear the team clothing of their federation.

Media

Media services and facilities are provided at the Event Centre. All media representatives are welcome to cover all the WMTBOC 2023 events.

All media accreditations should be made by e-mail:

> info@wmtboc2023.cz by 18th of June 2023 at the latest.

Media representatives and team officials are encouraged to bring their own Internet-enabled devices, as neither computers nor WIFI services will be offered by the organizer.

Antidoping

The organisers will apply the IOF Anti-Doping Rules valid at the time of the WMTBOC 2023. Doping is strictly forbidden, and the organisers of the WMTBOC 2023 are dedicated to support the Anti-Doping authorities in their work. Doping controls may be carried out any time during the competition period in accordance with the procedures described in the WADA International Standard of testing.

Athletes who are selected for doping control must bring an official identification (with photo) to the doping test area. The athlete should also bring along their therapeutic use exemption (TUE) if applicable. In general, it is advisable that athletes bring along their ID to all competitions and events. For more information, please consult:

> <https://orienteering.sport/iof/anti-doping/>

Rules

All events will be organized in accordance with the valid Competition Rules of IOF MTB Orienteering Events, please visit:

> <https://orienteering.sport/mtbo/competition-rules/>.

Competitors participate at their own risk. Third party insurance and personal injury insurance is compulsory and shall be the responsibility of their federation or themselves, according to national regulations.

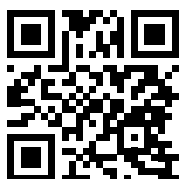
Off-track riding will be prohibited during all races, except map symbols where riding is permitted.



Jičín 2023

WORLD MTBO CHAMPIONSHIPS

wmtboc2023.cz



More information will be published
on the webpage and in the **Bulletin 3**



KRÁLOVÉHRADECKÝ
KRAJ

Středočeský kraj



This event is organized with the financial participation of the city of Jičín.