



World MTB Orienteering Championships

Junior World MTB Orienteering Championships

18 – 27/8/2023

Jičín – Czech Republic



wmtboc2023.cz

Invitation to Jičín, Czech Republic /Czechia

Dear MTBO friends,

on behalf of the Organizing Committee let me to share more information about this remarkable event. The whole organizing team is doing their best to prepare Championship on a very high level. We would love to welcome you to the Event Centre located at Jičín castle. And guess what? The final banquet will also be held there.

We prepared very challenging courses with high variety and different needs of skills. I am sure that you will enjoy every race. Pay attention to the information about "cutting" mentioned below.

We are already done with all permissions, maps preparation and courses setting. On behalf of the whole Committee, I would like to thank to all partners who supported us. Without their enthusiasm, we would not be able to organise such a competition on a required level.

I wish all athletes good luck in the final preparation and will be our honour to welcome you in Bohemian Paradise. [#roadtojičin](#)



Pavel MUSIL

Event Director WMTBOC 2023, Jičín



Organizers

International Orienteering Federation (IOF)

> <https://www.orienteering.sport>

Czech Orienteering Federation (ČSOS)

> <https://www.orientacnisporty.cz/en/>

SPORTCENTRUM Jičín

> <https://scjicin.cz>

Event Director: Pavel Musil

Competition Director: Jiří Putík

IOF Senior Event Adviser: Magnus Wallenborg (SWE)

National Controller: Milan Meier

Czech Orienteering Federation representative:

Zbyněk Pospíšek

Information & contacts

www.wmtboc2023.cz

info@wmtboc2023.cz

www.facebook.com/wmtboc2023jicin

Pavel Musil – event director contacts:

Phone: +420 602 391984

E-mail: musil@wmtboc2023.cz

Program

18. 8. 2023	Friday	Arrival
19. 8. 2023	Saturday	Arrival, Model Sprint Opening Ceremony
20. 8. 2023	Sunday	Sprint
21. 8. 2023	Monday	Model Forrest
22. 8. 2023	Tuesday	Long
23. 8. 2023	Wednesday	Middle
24. 8. 2023	Thursday	Rest day
25. 8. 2023	Friday	Mass Start
26. 8. 2023	Saturday	Relay, Banquet, Concert
27. 8. 2023	Sunday	Departure

Classes

World MTB Orienteering Championships

There are classes for women and one for men Elite and the same for women and for men U23.

In the Mass start, Middle distance and Sprint each Federation may enter up to a further 2 women and 2 men who qualify for the Women U23 and Men U23 classes respectively. No U23 classes are offered in the Long distance.

World Junior MTB Orienteering Championships

There is one class for women and one for men.

Only competitors who are entitled to compete in the classes W20 or M20 may participate.

Participation and rules

All competitors represent a Federation. Each Federation may enter a team of an unlimited number of competitors and team officials. A competitor must have a valid IOF Athlete License.

Competitors participate at their own risk. Third party insurance and personal injury insurance is compulsory and shall be the responsibility of their federation or themselves, according to national regulations.

World MTB Orienteering Championships

In the Mass start, Middle distance, Long distance and the Sprint every Federation may enter up to 6 women and 6 men and, in addition, the current World Champions for the distance may be entered by their Federation(s).

In the Relay, each Federation may enter two women's teams and two men's teams, each consisting of 3 team members. Incomplete teams and teams with cyclists from more than one Federation are not allowed.

World Junior MTB Orienteering Championships

In each competition every Federation may enter up to 6 women and 6 men. In the Relay, each Federation may enter two women's teams and two men's teams, each consisting of 3 team members. Incomplete teams and teams with cyclists from more than one Federation are not allowed.



Detailed Daily Schedule

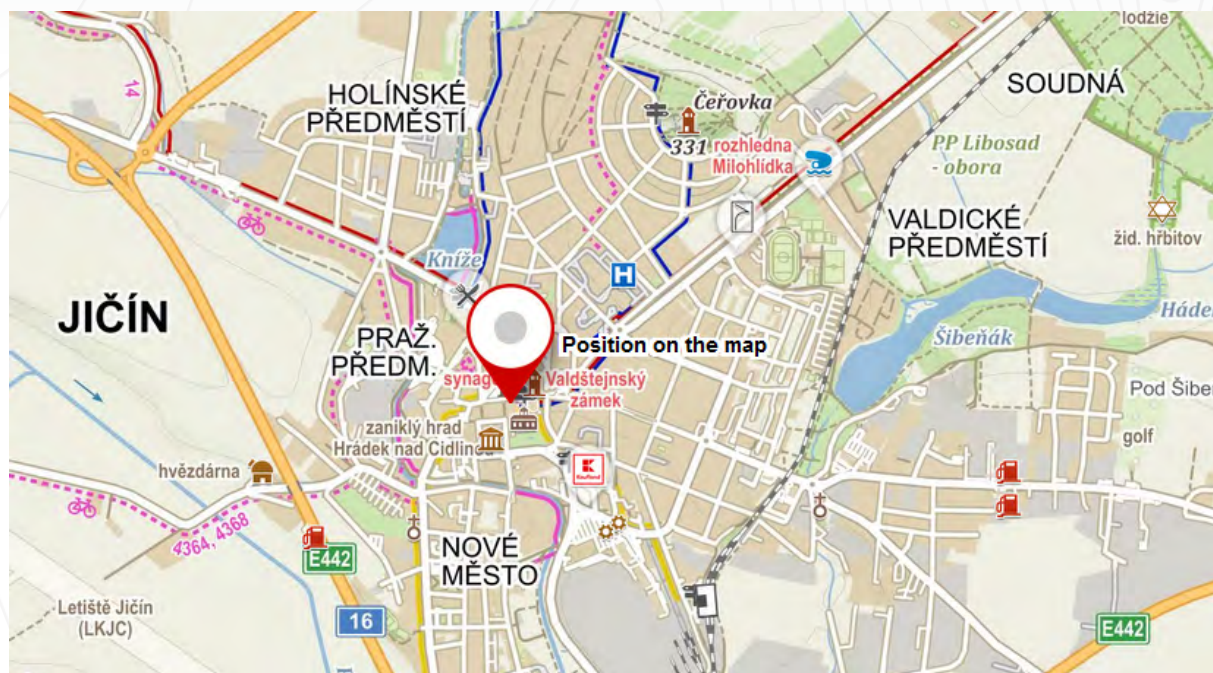
18. 8. 2023	Friday	17:00 – 19:00	Arrival Event Office Open – accreditation
19. 8. 2023	Saturday	15:00 – 19:00 10:00 – 12:00 12:00 17:00 – 18:00 18:00 – 19:00	Event Office Open – accreditation Model Sprint (Jičín) Deadline for name entries – Sprint Opening ceremony – Castle parque Team officials' meeting (EC*)
20. 8. 2023	Sunday	12:00 – 17:00 16:35 – 16:50 17:00 – 19:00 18:00 – 19:00 19:00 – 19:30	Sprint (Jičín) Flower ceremony (EC) Public race (Jičín) Team officials' meeting (EC) Prize-giving ceremony (EC)
21. 8. 2023	Monday	10:00 – 12:00 16:00 – 18:30 12:00 18:00 – 19:00	Model forest (5 km from Jičín) Event Office Open (EC) Deadline for name entries – Long Team officials' meeting (EC)
22. 8. 2023	Tuesday	8:00 – 15:00 12:00 16:00 – 18:30 18:00 – 19:00 19:00 – 19:30	Long (Mostek) Deadline for name entries – Middle Event Office Open (EC) Team officials' meeting (EC) Prize-giving ceremony (EC)
23. 8. 2023	Wednesday	9:30 – 14:00 16:00 – 18:30 19:00	Middle (Mostek) Event Office Open (EC) Prize-giving ceremony (EC)
24. 8. 2023	Thursday	17:00 – 18:30 12:00 18:00 – 19:00	Event Office Open (EC) Deadline for name entries – Mass start Team officials' meeting (EC)
25. 8. 2023	Friday	10:00 – 14:00 17:00 – 18:30 12:00 18:00 – 19:00 19:00 – 19:30	Mass start (Jabkenice) Event Office Open (EC) Deadline for name entries – Relay Team officials' meeting (EC) Prize-giving ceremony (EC)
26. 8. 2023	Saturday	9:00 – 14:00 14:00 – 16:00 17:00 – 17:30 17:30 – 20:00 20:00 – 22:00	Relay (Nová Paka) Public race (Nová Paka) Prize-giving and closing ceremony (EC) Banquet (Jičín castle) Concert (Jičín parquet)
27. 8. 2023	Sunday		Departure

*EC = Event Centre

All times are subject to change,
final program will be published
on the official website and in Bulletin 4.

Venues / Event Centre

Event centre will be in the Jičín Castle
Address: Valdštejnovo náměstí 1, 50601 Jičín
GPS: 50.4364153N, 15.3520497E
> <https://goo.gl/maps/jLa2D5oWV18tEiMp9>



Venues / Competition

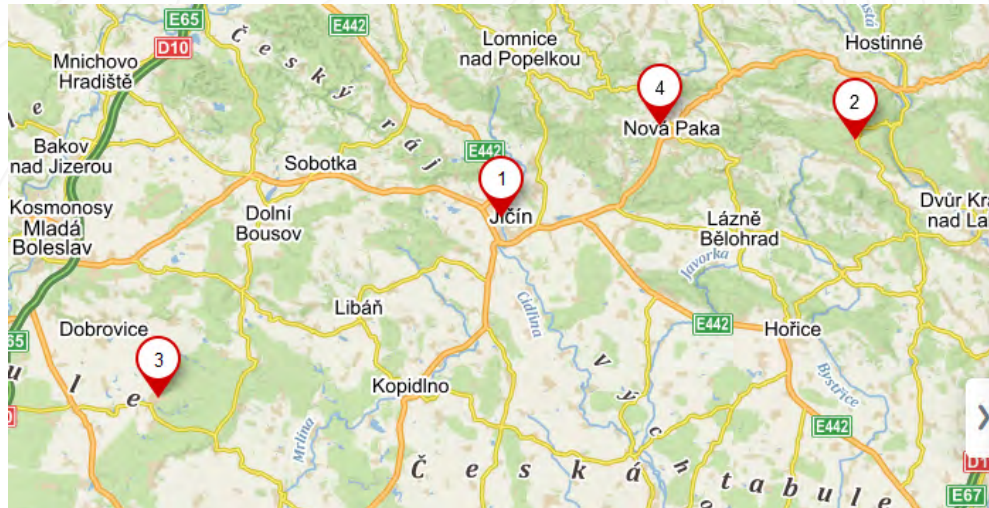


Sprint > Arena for sprint will be directly in **Jičín (1)** town close to the Event centre.

Long and Middle > Arena for Long and Middle will be in village **Mostek (2)**, 30 km from Jičín (30 min of driving).

Mass start > Arena for Mass start will be in village **Jabkenice (3)**, 40 km from Jičín (40 min of driving).

Relay > Arena for Relay will be in **Nová Paka (4)** town, 20 km from Jičín (20 min of driving).

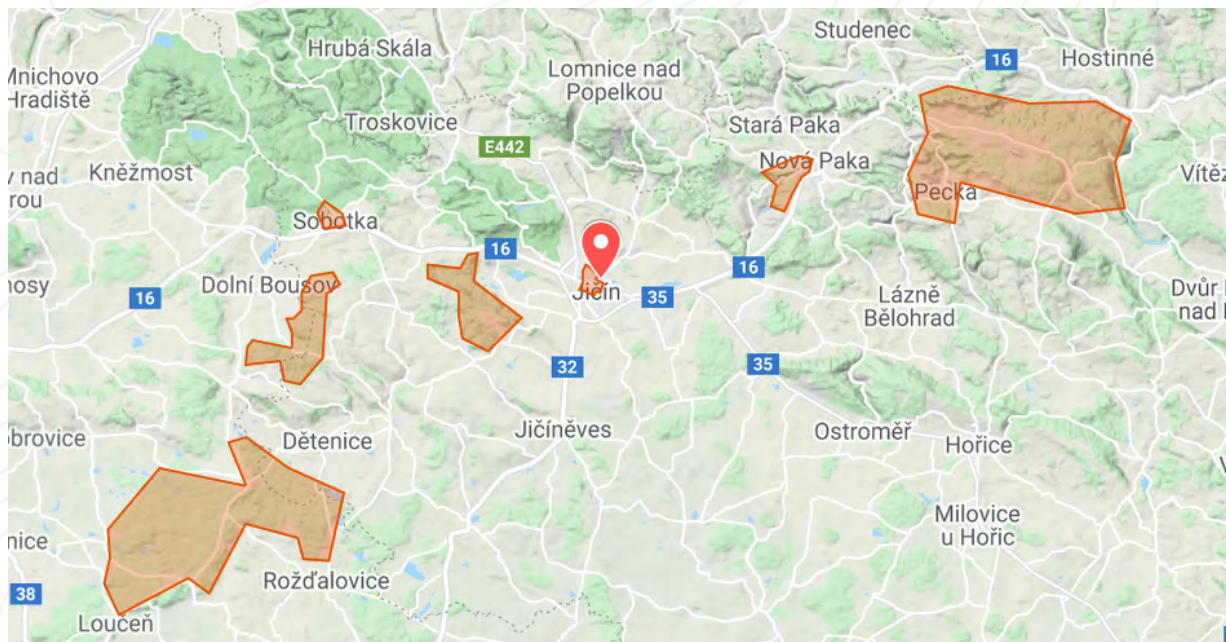


- 1 Sprint - arena Jicin**
Valdštejnovo náměstí, Jičín, Jičín
50.4370081N, 15.3518486E
- 2 Long & Middle - arena Mostek**
50°29'4.068"N, 15°41'41.844"E
50.4844631N, 15.6949567E
- 3 Mass start - arena Jabkenice**
50°19'30.782"N, 15°1'11.943"E
50.3252175N, 15.0199842E
- 4 Relay - arena Nova Paka**
50°29'35.571"N, 15°30'22.297"E
50.4932144N, 15.5061936E

For list of arenas and directions, please visit:

> <https://en.mapy.cz/s/kabasaleja>

Embargoed areas / Overview of the region with Event centre marked



Link to embargoed areas:

> <https://www.google.com/maps/d/edit?mid=1xxQqBEOqqI47turZiJQJGWxx0KqbrTry&usp=sharing>

Any attempt to survey or train in the competition terrain is forbidden, unless explicitly permitted by the organizer. The embargoed areas are out of bounds for all potential participants and team members, including competitors, team leaders, coaches, doctors, and any other person who through their knowledge of the terrain may influence the result of the competitions.

Exceptions to this area:

- Passage through the embargoed areas is allowed on public roads by vehicle.

Previous maps

- **Jičín** (Foot-O), 2018, 1:5 000 > <https://mapy.orientacnisporty.cz/data/jpg/9660X.jpg>
- **Za barakem** (Foot-O), 2007, 1:10 000 > <https://mapy.orientacnisporty.cz/data/jpg/4722a.jpg>
- **Raholec** (MTBO), 2016, 1:15 000 > <https://mapy.orientacnisporty.cz/data/jpg/8696X.jpg>
- **Vičí kokotec** (MTBO), 2006, 1:15 000 > <https://mapy.orientacnisporty.cz/data/jpg/5671b.jpg>
- **Netopyři** (MTBO), 2014, 1:15 000 > <https://mapy.orientacnisporty.cz/data/jpg/7469.jpg>
- **Holubi i Jeleni** (MTBO), 2014, 1:15 000 > <https://mapy.orientacnisporty.cz/data/jpg/7339.jpg>,
> <https://mapy.orientacnisporty.cz/data/jpg/7340X.jpg>
- **Pecka** (Foot-O), 2019, 1:10 000 > <https://mapy.orientacnisporty.cz/data/jpg/10521X.jpg>
- **Haklův Mlýn** (Foot-O), 2002, 1:15 000 > <https://mapy.orientacnisporty.cz/data/jpg/3495a.jpg>
- **Yperit** (Foot-O), 2010, 1:10 000 > <https://mapy.orientacnisporty.cz/data/jpg/5976a.jpg>
- **Humprecht** (Foot-O), 1996, 1:10 000 > <https://mapy.orientacnisporty.cz/data/jpg/2253a.jpg>
- **Svatojiřský les** (MTBO), 2010, 1:20 000 > <https://mapy.orientacnisporty.cz/data/jpg/5725a.jpg>



Training opportunities

An excellent chance to get top ready for WMTBOC2023 races is to take the 5 days MTBO event MTBO5days (July 5-9 2023) as a training package.

Details:

To know more, keep checking the event website: <http://www.mtbo5days.eu>, as additional information will be provided there.

Schedule:

- July 5, 2023: Stage 1 – middle
 - July 6, 2023: Stage 2 – sprint
 - July 7, 2023: Stage 3 – middle - mass start
 - July 8, 2023: Stage 4 – long
 - July 9, 2023: Stage 5 – semi-free order
- (Some of these races will be Czech Cup and probably WRE)

Event Center/Accommodation:

Poslův mlýn, Doksy, CZE

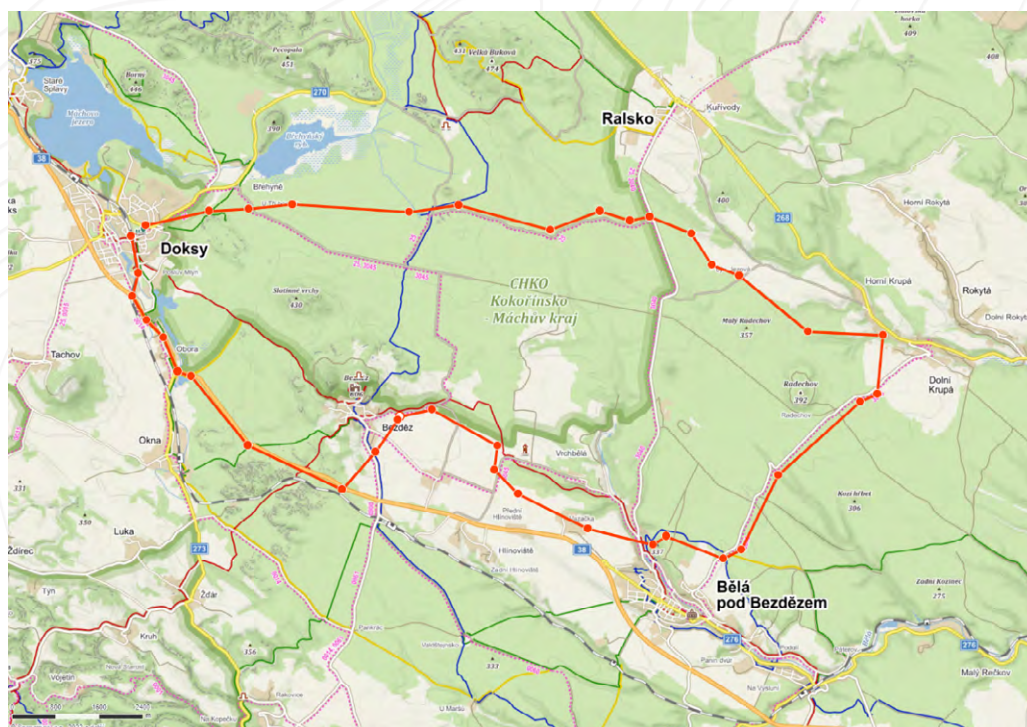
Race area:

The race area is a restricted area until the MTBO5days races take

Other Czech MTBO races are listed here:

> <https://www.mtbo.cz/zavody/kalendar-zavodu/>

There are some training possibilities on one year old maps\ from Czech MTBO Cup. No other training possibilities will be organised by the WMTBOC Committee.



Entries

All entries must be made via IOF Eventor, where is a current summary of entries visible:

World MTBO Championships:

> <https://eventor.orienteering.org/Events/Show/6877>

Junior MTBO Championships:

> <https://eventor.orienteering.org/Events/Show/6872>

Competitors may only be entered by their Federations.
Entries open on 1st February 2023

Entry fees:

	WMTBOC	JWMTBOC	Officials
Accreditation* (per person)	1.700 CZK	1.700 CZK	1.700 CZK
Sprint	1.700 CZK	1.200 CZK	
Long	1.700 CZK	1.200 CZK	
Middle	1.700 CZK	1.200 CZK	
Mass start	1.700 CZK	1.200 CZK	
Relay (per team)	5.000 CZK	3.600 CZK	

Prices includes Model Events and final banquet*.



Deadlines:

Team size by 18th of June 2023 at the latest:

- number of competitors in each discipline of each gender
- number of relay teams
- number of team officials
- name of team manager (name, e-mail address, phone)

Team names by 10th of August 2023 at the latest

- each competitor's name, gender, year of birth, the competitions in which he/she will compete, SI card number
- names of team officials

Late entries and withdrawals:

Late entries/withdrawals will be accepted as follows:

After 18th of June 2023

- entries will be accepted with surcharge of 20 %
- withdrawals will receive a refund of 80 %

After 10th of August 2023

- entries will be accepted with surcharge of 50 %
- withdrawals will receive a refund of 50 %

A charge for a possible name changes after 6th of July is 300 CZK per name.

After 16th of August 2023 no entries will be accepted.

Payment details:

Account owner:

SPORTCENTRUM Jičín, z.s.,

Brada 7, Brada-Rybníček, Czech Republic

BIC: FIOBCZPPXXX

IBAN: CZ04 2010 0000 0020 0189 3874

Bank: Fio banka, a.s., Millennium Plaza, V Celnici 10, 117 21 Praha 1, Czech Republic

All charges and bank fees are to be paid by the payer.

Full payment of all entries including accreditation fees must be made by **16th of July 2023** at the latest. An additional fee for late payment is 10%.

The rest of 50% for accommodation payment must be also made by **16th of July 2023**

For additional entries or name change the payment must be sent within 4 days.

Map details and samples, terrain description

All maps will be drawn according to the International Specification for Mountain Bike Orienteering Maps (latest version).

Sprint

Event centre: Jičín
Map scale: 1:5 000
Contour interval: 5m

The Sprint area is a combination of suburban forest, park, but mostly urban area of a town with a varied terrain. The area has a dense network of tracks and paths with a good rideability. A rather flat area with one significant hill.

Map example:



Middle

Event centre: Mostek
Map scale: 1:10 000
Contour interval: 5m

The Middle distance area has the rugged and moderately hilly terrain, covered with a network of roads and paths with a varied rideability. The spruce forest is followed by a suburban forest and the edge of a small town, where the finish arena is located. Good visibility.

Map example:

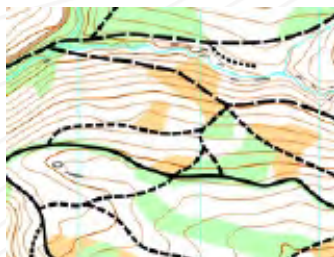


Long

Event centre: Mostek
Map scale: 1:15 000
Contour interval: 5m

The Long distance area is situated in submontane area in a hilly spruce (mostly) forest with many valleys and ridges. There are also populated areas on the map - villages, solitary houses, farms with meadows. Part of the area has a typical red clay subsoil that becomes slippery during rain. Steep slopes and climbing require a good riding technique. The whole competition area is covered with a network of forest roads and paths with a varied rideability.

Map example:



Relay

Event centre: Nová Paka
Map scale: 1:7 500
Contour interval: 5m

The Relay area is hilly to moderate hilly, mainly spruce suburban forest with an extensive network of paths and tracks. Some areas with a very dense path network occur. Paths and tracks are of a wide variety of speeds. Part of the map consists of urban development, made up of industrial and residential parts.

Map example:



Winning times

Winning times will be as specified in the IOF MTB Orienteering Rules for WMTBOC (16.8) and the IOF MTB Orienteering Rules for JWMTBOC (16.9) valid for 2023

> <https://orienteering.sport/mtbo/competition-rules/>

Punching system

SportIdent punching system will be used. Backup SportIdent system will be used according to the latest recommendation of IT and MTBO IOF Committees.

All competitors must use SportIdent cards. Rental of SportIdent cards will be possible for a price of 150 CZK/ race. A deposit of 2 000 CZK per device will be charged.

Mass Start

Event centre: Jabkenice
Map scale: 1:15 000
Contour interval: 5m

The Mass start area is mostly flat with some moderate valleys. Mixed forest with a dense network of roads and tracks. Mainly good visibility with some parts with younger forest where the visibility is lower. Generally fast/very fast cycling.

Map example:



Model Events

Sprint and Forest model

Two areas will be used for the model events – one for Sprint and one for Forest races.

Only flags (30x30 cm) will be put in the areas.

Technical model

Examples of control site construction (flag, control code, SI station, reserve punching station)

will be displayed on Saturday 19.8. in the Event centre.

Courses

- the length, total climb, number of controls, possible refreshment controls on each individual course and, for relays, on each leg
- the winning times correspond to the IOF 2023 Competition MTBO rules

Race		WMTBOC Men	WMTBOC Women	JWMTBOC Men	JWMTBOC Women
Sprint	Length	9,2 km	8,3 km	8,1 km	6,8 km
	Total climb	90 m	90 m	80 m	75 m
	Controls	35	30	28	22
	Refreshments	at the finish	at the finish	at the finish	at the finish
Long	Length	38,5 km	29,7 km	28,7 km	22,5 km
	Total climb	1010 m	815 m	790 m	690 m
	Controls	34	27	23	21
	Refreshments	1 during the race + at the finish	1 during the race + at the finish	1 during the race + at the finish	1 during the race + at the finish
Middle	Length	17,2 km	15,5 km	14,4 km	12 km
	Total climb	530 m	470 m	460 m	360 m
	Controls	30	26	19	19
	Refreshments	at the finish	at the finish	at the finish	at the finish
Mass start	Length	36 km	31,3 km	29,3 km	24,9 km
	Total climb	170 m	135 m	125 m	105 m
	Controls	31	25	25	24
	Refreshments	at the finish	at the finish	at the finish	at the finish
Relay	Length	16 km	12,6 km	13,5 km	10,5 km
	Total climb	460 m	370 m	380 m	310 m
	Controls	30	30	28	24
	Refreshments	at the finish	at the finish	at the finish	at the finish

Length and climb is calculated using the shortest sensible route.

The courses' parameters are preliminary. Definitive course data will be published in Bulletin 4.





Team Officials' Meeting

- The Team Officials' meeting will be held at 18:00 in the evening prior to each race.
- The meeting will take place at the Event Office.
- The Technical Director with the IOF Senior Event Adviser will run the meeting.
- The agenda will follow IOF rules, appendix 5.

Each federation is entitled to participate with up to two persons according to the rules.

After the meeting, the information from the meeting will be uploaded on the website <http://wmtboc2023.cz/>

Start numbers, start lists, and other information will be handed out before the meeting at the Event Office from 17:30.

Accommodation

All types of accommodation are sold out. The possibility to order was mentioned in Bulletin 2. Deadline was 31st December 2022, no other accommodation possibilities will be offered by the WMTBOC organiser.

Catering

Food and drink will be arranged (lunch) for teams in the arenas. There will be organised healthy warm food, served in ecological packaging. It is necessary to order before – see below. Without pre-order there won't be any possibility to buy.

Deadline for ordering: **31.07.2023**
(order per mail info@wmtboc2023.cz)
Price: 220 CZK/lunch

Bike storage

Lockable/guarded bike storage will be arranged at accommodation.

Transport

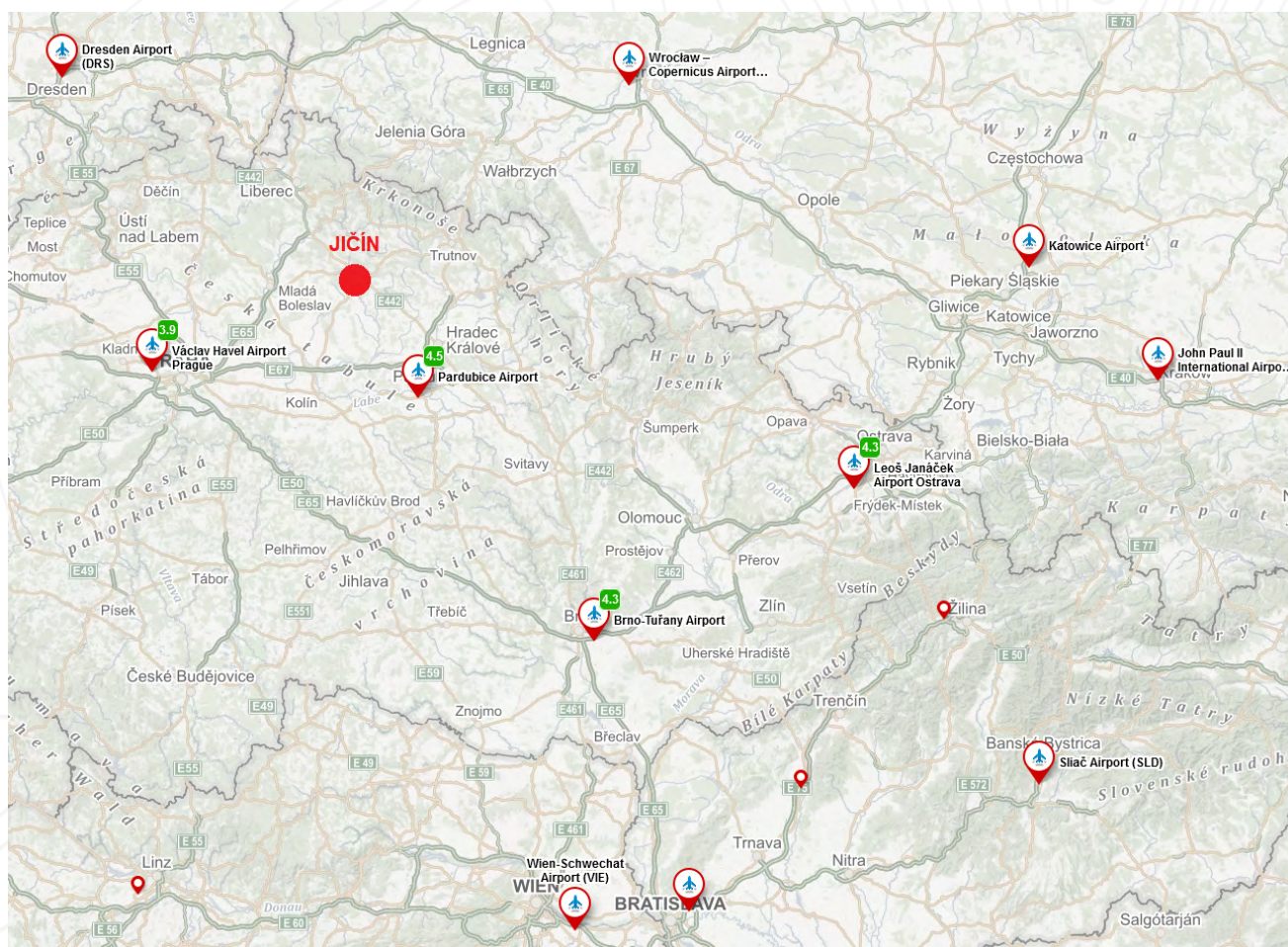
The closest international airport is Václav Havel Airport in Prague (PRG > www.prg.aero), 110 km / 1,5 hours drive to Jičín.

Other international airports are further away in neighbouring countries – see the picture. Common rental services operate on those airports.

Jičín is connected only by regional trains but has a direct connection by bus from Prague. You must use public transport to get from the Airport first. Bikes can be taken on trains.

For more information, time tables, tickets and prices see:
> <https://idos.idnes.cz/en/vlakyautobusymhdvse/spojeni/>

For special transport requests, please contact the organisers > info@wmtboc2023.cz



Visas

According to the current regulations citizens of some countries must obtain a visa in order to enter the Czech Republic.

Please note that conditions of entry to the Czech Republic can change and all WMTBOC 2023 participants are advised to keep up to date of the current situation.

Please visit:

> https://www.mzv.cz/jnp/en/information_for_alien/index.html

> https://www.mzv.cz/jnp/en/diplomatic_missions/czech_missions_abroad/

Climate

August in the Czech Republic is one of the warmest months of the year, with average daily temperature of 23°C - 26°C.

However temperature can drop to 10°C during the night and rise up to 35°C in sunny days. August is also the month with lot of storms and rainfalls. One can expect a week of dry and sunny weather as well as days with all-day rain and cloudy sky.





Hazards

Wasp and hornets can be possibly encountered in the areas. Ticks, carrying Tick-borne encephalitis and Lyme disease are present. Competitors participate at their own risk. Insurance against accidents is the responsibility of their federation or themselves, according to national regulations. There are no other peculiarities of the event.

Clothing

During all the official events the competitors shall wear the team clothing of their federation.

Media

Media services and facilities are provided at the Event Centre. All media representatives are welcome to cover all the WMTBOC 2023 events.

All media accreditations should be made by e-mail:
> info@wmtboc2023.cz by 18th of June 2023 at the latest.

Media representatives and team officials are encouraged to bring their own Internet-enabled devices, as neither computers nor WIFI services will be offered by the organizer.

Antidoping

The organisers will apply the IOF Anti-Doping Rules valid at the time of the WMTBOC 2023. Doping is strictly forbidden, and the organisers of the WMTBOC 2023 are dedicated to support the Anti-Doping authorities in their work. Doping controls may be carried out any time during the competition period in accordance with the procedures described in the WADA International Standard of testing.

Athletes who are selected for doping control must bring an official identification (with photo) to the doping test area. The athlete should also bring along their therapeutic use exemption (TUE) if applicable. In general, it is advisable that athletes bring along their ID to all competitions and events. For more information, please consult:

> <https://orienteering.sport/iof/anti-doping/>

Rules

All events will be organized in accordance with the valid Competition Rules of IOF MTB Orienteering Events, please visit:

> <https://orienteering.sport/mtbo/competition-rules/>.

Competitors participate at their own risk. Third party insurance and personal injury insurance is compulsory and shall be the responsibility of their federation or themselves, according to national regulations.

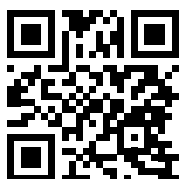
Off-track riding will be prohibited during all races, except map symbols where riding is permitted. Also cutting is strictly prohibited – just path riding is allowed.



Jičín 2023

WORLD MTBO CHAMPIONSHIPS

wmtboc2023.cz



We are looking forward hosting the World MTBO Championships
and Junior World MTBO Championships 2023.
See you in Jičín, Czech Republic! [#roadtojicin](https://twitter.com/roadtojicin)



This event is organized with the financial participation of the city of Jičín.